


# EMG 90-B17

Order No.: 2946269




<http://eshop.phoenixcontact.de/phoenix/treeViewClick.do?UID=2946269>

Custom circuit module, consisting of housing, MKDS 3 connection terminal blocks and PCB

Commercial data	
GTIN (EAN)	 4 017918 082222
sales group	F001
Pack	5 pcs.
Customs tariff	85369010
Catalog page information	Page 547 (CC-2009)

**Product notes**

WEEE/RoHS-compliant since:  
06/01/2006



<http://www.download.phoenixcontact.com>  
Please note that the data given here has been taken from the online catalog. For comprehensive information and data, please refer to the user documentation. The General Terms and Conditions of Use apply to Internet downloads.

Technical data	
General	
Housing type	Component housing
Housing material	Polycarbonate fiber reinforced
Color	green

**Dimensions / positions**

Length	75 mm
Width	90 mm
Number of positions	34
Pitch	5 mm

**Technical data**

Ambient temperature (operation)	-40 °C ... 125 °C
Inflammability class acc. to UL 94	V0
Power dissipation at 20°C in the horizontal mounting position	4.1 W 4.6 W 7.5 mm
	5 W 5.7 W 15 mm
	6.1 W 7.1 W 52 mm

**Accessories**

Item	Designation	Description
<b>Assembly</b>		
2941824	EMG 90-ZE	Intermediate element, to enlarge the assembly space
2941510	EMG-KA	Terminal block/screw cover, set consisting of 50 strips each for terminal blocks and screw openings, 1 strip covers 12 terminal points.

**Marking**

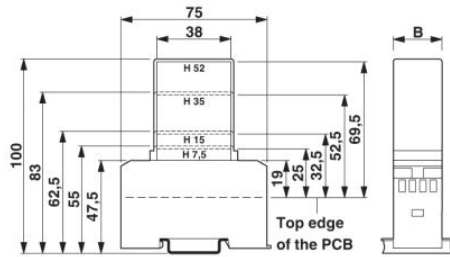
2947035	EMG-GKS 12	Equipment marker, width 12 mm
2941594	EMG-GKS 22	Equipment marker tag, width 22 mm

**Additional products**

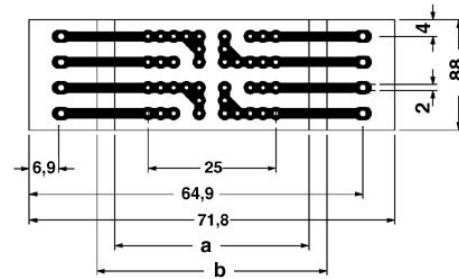
Item	Designation	Description
<b>Assembly</b>		
2945396	EMG 90-H 7,5MM KLAR	Covering hood, for the contact and dust-protected encapsulation of the components, in transparent design. Height: 7.5 mm
2945406	EMG 90-H 15MM KLAR	Covering hood, for the contact and dust-protected encapsulation of the components, in transparent design. Height: 15 mm, width: 90 mm
2944300	EMG 90-H 52MM GN	Covering hood, for the contact and dust-protected encapsulation of the components, in green design. Height: 52 mm, width: 90 mm

**Diagrams/Drawings**

Dimensioned drawing



1 = Top edge of the PCB  
 B = Housing width



Pitch 5 mm  
 a = Area for mounting components, 38 mm in the hood  
 b = Area for mounting components, 45 mm in the housing

**Address**

PHOENIX CONTACT Deutschland GmbH  
Flachmarktstr. 8  
32825 Blomberg, Germany  
Phone +49 5235 3 12000  
Fax +49 5235 3 41200  
<http://www.phoenixcontact.de>



© 2011 Phoenix Contact  
Technical modifications reserved;